



Scan this QR Code
to read more
information online.

Standard Containers

20 or 40 Foot Long

Standard containers are commonly available as 20 foot (6m) or 40 foot (12m). Generally, 2 x 20 foot containers would take preference over 1 x 40' unless the items to be stored inside required the more than 3 meters in length.



40' GP with Double End Doors

GP, HC or PWHC

Standard containers are available in general purpose, high cube and pallet wide formats. The high cube allows for an extra 30 centimeters in height and a pallet wide can fit two pallets side by side.



High Cube vs General Purpose

Steel or Timber Floors

For heavy duty use, steel floors allow for an extra load bearing weight and longer container life. Timber floors are the cheaper alternative and have been chemically treated to deter insects.



20' HC with Steel Floors

Side or End Doors

Depending on your access requirements, new standard containers are available with bi-fold opening doors one or each side and cargo doors on one or both ends.



Side Opening Bi-Fold Doors

Container Shelving

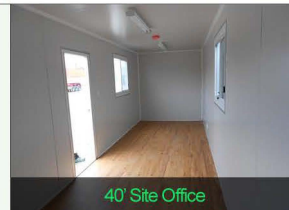
Shipping containers can be equipped with heavy duty tiered shelving, equipment racks, gear trays and workbenches to create a portable storage space, equipment store or workshop.



20'GP with Shelving & Workbench

Custom Modifications

New shipping containers can be modified to meet the needs of any custom project with the addition of doors, windows, vinyl flooring, air conditioning, lighting, electrical fit, personnel doors and more.



40' Site Office

Dimensions Available

Standard size shipping containers are the most commonly used containers in the shipping and freight industry.

Be sure to consider lashing rings, corner posts and end or side doors for exact dimensions.

Our fabrication team can increase the length, width and height of containers to suit custom specifications. Containers can also be adjoined to create larger space solutions.

Shipping Container
20'GP
40'GP
20'HC
40'HC
20'PWHC
40'PWHC

Common Modifications
Access doors
Partition walls
Windows
Electrics
Lighting
Plumbing
Aircon
Shelving
Lock box
Custom painting
Ventilation
Insulation

Capacity	Max. Cargo	Container Weight	Internal Dimensions			External Dimensions		
			Length	Width	Height	Length	Width	Height
33m ³	28,200kg	2,280kg	5.9m	2.35m	2.39m	6.06m	2.44m	2.59m
67.7m ³	26,880kg	3,600kg	12.01m	2.35m	2.39m	12.19m	2.44m	2.59m
37.4m ³	28,330kg	2,300kg	5.9m	2.35m	2.69m	6.06m	2.44m	2.89m
76.4m ³	26,580kg	3,900kg	12.01m	2.35m	2.69m	12.19m	2.44m	2.89m
38.4m ³	27,920kg	2,560kg	5.9m	2.42m	2.69m	6.06m	2.49m	2.89m
78.3m ³	29,820kg	4,180kg	12.01m	2.42m	2.69m	12.19m	2.49m	2.89m

Small



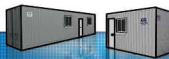
Refrigerated



Bulk



Offices



Amenities



Workshops



Storage

